



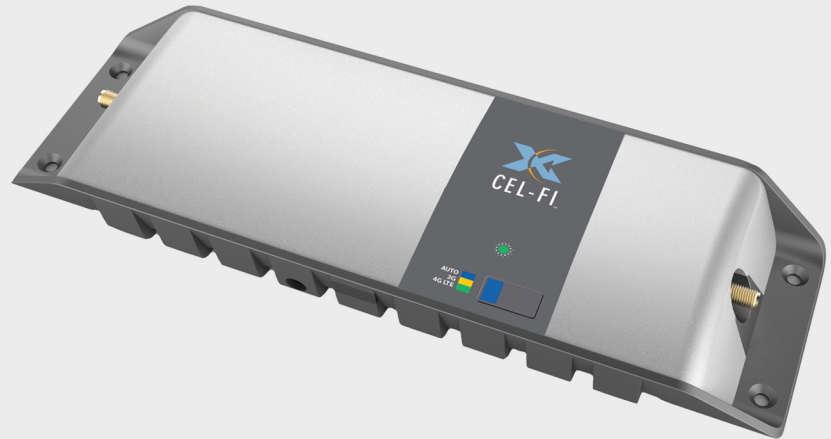
CEL-FI GO Smart Signal Repeater

Your mobile solution to improve 3G/4G voice and data coverage

IMPROVE YOUR MOBILE COVERAGE ON THE MOVE

Good things do come in small packages.

Cel-Fi GO is a 3G/4G mobile signal amplifier that provides up to 100 dB of signal gain - 30x more powerful than a standard antenna/cradle set-up. All the while unconditionally protecting the mobile network.



BENEFITS OF CEL-FI GO



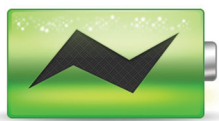
Provides Coverage For Automotive Applications

Simply install Cel-Fi GO inside your vehicle and enjoy having great 3G or 4G mobile reception. It is ideal for areas with high 5Ghz saturation. No longer will you need to stop or drive to a particular spot to be able to make and receive phone calls. Your Cel-Fi GO can be configured to improve the mobile coverage for all types of vehicles from cars to trucks, to farm machinery and caravans, all with only a change in antenna.



Increases Mobile Data Speeds

Slow internet speeds on your mobile device are often caused by low signal. If you suffer from low signal on the go, you will be able to relate to the frustration of trying to access email or the internet. Cel-Fi GO will amplify the available LTE or HSPA mobile signal and increase your data speeds dramatically. Email, internet, video and social networking speeds can achieve up to 4x improvement. Note: The 4G/LTE bands can only be utilised for data (not calls) unless both the smart phone and the local network support Voice over LTE (VoLTE).



Extends Mobile Phone Battery Life

Mobile phones use a lot more energy when in poor signal areas. The phone adjusts its output power to compensate in an attempt to boost the poor signal. As a result the phone will consume a lot more battery power. Using Cel-Fi GO, your indoor mobile signal should be high and the battery will last noticeably longer for you to work and talk while on the move.



Eliminates Dropped or Missed Calls

Never miss or lose an important call while on the move because of coverage issues again. Cel-Fi GO will provide improved coverage in your vehicle so you can be contacted when required. No longer do you have to put up with calls dropping out or terminating during conversation while on the move.



Improves Voice Quality

The quality of a voice call is usually determined by the phone's signal strength and nearby interference. With improved signal strength inside your vehicle, Cel-Fi GO mobile version will provide crystal clear voice quality for your cell phones.

GOMob0818



CEL-FI GO FEATURES

- ➔ The mobile solution approved by Telstra and meeting ACMA regulations.
- ➔ Amplifies and disburses a 3G (HSPA) or 4G (LTE) Telstra mobile signal. Note: Cel-Fi GO will only boost one frequency band at a time.
- ➔ Provides manual selection of 3G or 4G or utilise the auto band selection. Band selection is via a button on top of the unit or using the WAVE App.
- ➔ Once installed, Cel-Fi GO has Automatic Gain Control (AGC) continuously monitoring system path loss to deliver maximum gain up to 100 dB.
- ➔ Provides mobile coverage in and around the vehicle/area.
- ➔ Rigid cast-aluminium casing with IP54 rating, suitable for adverse environments.
- ➔ Network-Safe protection that monitors mobile base stations in real time to ensure no interference with the normal function of the mobile network.
- ➔ Cel-Fi GO supports Bluetooth Connectivity or Micro USB connection to Nextivity's Smartphone or PC WAVE App.
- ➔ Intuitive WAVE App allows quick and easy installation by a trained technician.

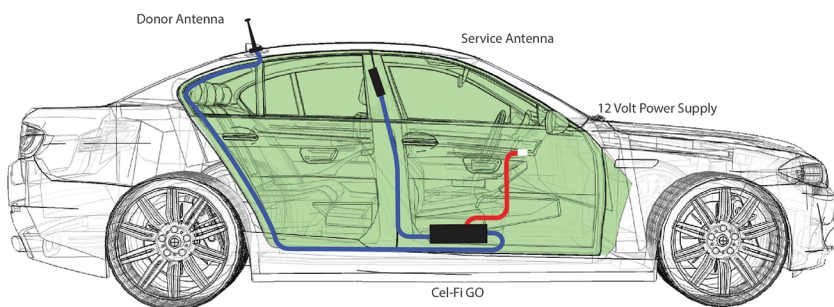
NOTES

Cel-Fi GO will provide coverage for 20+ active users depending on the mobile network capacity in your area.

The 4G/LTE bands can only be utilised for data if both the smart phone and the local network support Voice over LTE (VoLTE). You will need to check your smart phone to confirm it has VoLTE functionality.

Cel-Fi GO mobile version will not boost in areas where the signal is already very strong. If the signal is better than -80dBm (3G) or -95dBm (4G) the mobile GO version will cease to boost to ensure a degraded level of service is not experienced.

CEL-FI GO MOBILE PACK OPTIONS



BASE PACK



RV/TRUCKER PACK



SPECIFICATIONS

MODEL

Cel-Fi GO for Telstra - Mobile Version

CELLULAR BANDS

3G 850 & 4G 700/1800 MHz
(one frequency band at a time)

SYSTEM GAIN

Up to 100 dB

DIMENSIONS

Size: 28MM (H) 87MM (W) 255MM (L)
Weight: 600g

ENVIRONMENT

Operating temperature: 0° to 65°C
Storage temperature: -25° to 65°C
Relative humidity: 0 to 95%, noncondensing

POWER

12 VDC via external supply OR cigarette socket
External supply: 100 to 240 VAC, 47 – 63Hz.
Power consumption less than 15W per unit

ANTENNA REQUIREMENTS

SMA Female Outdoor Antenna Connector (50 Ω)
SMA Female Indoor Antenna Connector (50 Ω)
Approved antenna are supplied with the units.

WARRANTY

Cel-Fi GO is covered by a 24 month warranty.

INSTALLATION

Your Cel-Fi GO is approved if installed correctly. Only qualified resellers who have undertaken product training should perform installation of Cel-Fi GO.

Mobile version Cel-Fi GO's require you to take into account the vehicle's safety mechanisms such as airbags, ABS, Traction Control, Stability Control and Auto Electrics. Incorrect installation may result in water leaks, electrical failure, battery damage, fusing of internal wiring and cables or risk of FIRE.

Misuse of this equipment could result in injury and equipment damage.